



Electric Screwdrivers

Versatec & ES Series



REAL TOOLS FOR REAL WORK.™

Versatec Series



- Low Voltage DC Electric Screwdrivers
- Adjustable Shut off clutch for precision torque control
- Electro-static discharge (ESD) models offer added protection for sensitive electronic assembly applications
- Brushless models deliver increased durability and accuracy
- Micro, Low & High Torque options available
- Recommended for tightening small bolts and screws

ES Series

- Low Voltage DC Electric Screwdrivers
- Automatic Shut off clutch for precision torque control
- Controller features variable speeds and soft-start
- Low torque, high torque and clean room models available.

Versatec Series Micro Torque Screwdrivers - Inline Only

Torque Range: 0.18 - 3.5 in-lbs (0.02 - 0.40 Nm)

Features

- Speeds: 600 – 1,000 rpm
- 40 V DC from controller (ECM24N)
- Electro-static discharge (ESD) models offer added protection for sensitive electronic assembly applications
- Extremely lightweight and compact ergonomic design
- Variable speed and soft-start features built into controller
- Detachable 1.5 m cable, hanger bail, and two bits included
- Recommended for low-torque applications requiring additional ESD protection along with precise torque and speed control



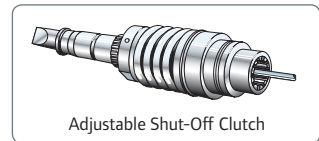
ELM0107N



ECM24N

Model	V	in-lbs (Nm)	in-lbs (Nm)	rpm	lb (kg)	in (mm)	in (mm)	Controller Required
DC INLINE LEVER START								
ELM0107N	24 V DC	0.18 – 0.62 (0.02 – 0.07)	0.35 – 1.77 (0.04 – 0.20)	750	0.51 (0.23)	6.52" (165.5)	0.16" (4.0)	ECM24N
ELM0110N	24 V DC	0.18 – 0.62 (0.02 – 0.07)	0.35 – 1.77 (0.04 – 0.20)	1,000	0.51 (0.23)	6.52" (165.5)	0.16" (4.0)	ECM24N
ELM0306N	24 V DC	1.33 – 3.54 (0.15 – 0.40)	-	600	0.51 (0.23)	6.52" (165.5)	0.16" (4.0)	ECM24N

CONTROLLER								
Model	Input Voltage	Output Voltage	lb (kg)	in (mm)	Soft Start	Speed Adjust	ESD Control	
CONTROLLER								
ECM24N	115 V AC	24 V DC	1.98 (0.90)	5.9" x 3.6" x 2.1" (150 x 91 x 52)	YES	YES	YES	



Adjustable Shut-Off Clutch

Service and Accessories

Manuals:

- 45549169
- 45549144
- 45549177

Controller Manuals:

- 45549193
- 45549185
- 45549201

Accessories:

- Balancer
- Shaker box
- Bits

Versatec Series Low Torque Screwdrivers - Inline Only

Torque Range: 0.26 - 10.4 in-lbs (0.03 - 1.2 Nm)

ESD & Non-ESD version available

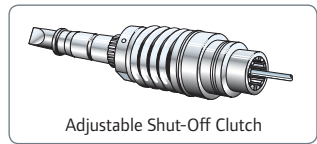
Features

- Speeds: 500 - 1,000 rpm
- 24 V DC from controller (EC24N)
- Ergonomic package features contoured soft-touch grip, two-finger lever actuation, and easy forward reverse control providing the ultimate in operator comfort and productivity
- Variable speed and soft-start features built into controller
- Lightweight, compact design
- Externally adjustable torque control
- Clean room models available without soft-touch grip
- Two bits, 1.5 m cable, and hanger bail included
- Recommended for low-torque applications requiring precise torque and speed control



Model	V	in-lbs (Nm)	rpm	lb (kg)	in (mm)	in (mm)	Controller Required
LEVER START ESD ONLY MODEL							
EL1007BC-ESD	24 V DC	1.7 - 10.4 (0.19 - 1.2)	500 - 700	0.77 (0.35)	10.5" (267)	1/4" ⌀	EC24N-ESD
LEVER START SOFT STOP ESD MODELS							
ELO410BC-SS-ESD	24 V DC	1.7 - 3.5 (0.2 - 0.4)	700 - 1000	0.88 (0.4)	10.5" (267)	0.16" (4.0)	EC24N-ESD
ELO510BC-SS-ESD	24 V DC	2.2 - 4.8 (0.2 - 0.5)	700 - 1000	0.88 (0.4)	10.5" (267)	0.16" (4.0)	EC24N-ESD
ELO807BC-SS-ESD	24 V DC	3.9 - 8.2 (0.4 - 0.9)	500 - 700	0.88 (0.4)	10.5" (267)	0.16" (4.0)	EC24N-ESD
EL1007BC-SS-ESD	24 V DC	4.8 - 10.4 (0.5 - 1.2)	700 - 1000	0.88 (0.4)	10.5" (267)	0.16" (4.0)	EC24N-ESD
INLINE LEVER START							
EL0109B	24 V DC	0.26 - 1.30 (0.03 - 0.15)	650 - 950	0.7 (0.32)	9.25" (235)	0.16" (4.06) ⌀	EC24N
EL0410B	24 V DC	0.44 - 4.79 (0.05 - 0.54)	750 - 1000	0.8 (0.32)	9.25" (235)	0.25" (6.35) ⌀	EC24N
EL1007B*	24 V DC	0.5 - 10.44 (0.06 - 1.2)	500 - 700	0.8 (0.32)	9.25" (235)	0.25" (6.35) ⌀	EC24N
INLINE LEVER START CLEAN ROOM							
ELO410BC	24 V DC	0.44 - 4.79 (0.05 - 0.54)	750 - 1000	0.8 (0.32)	9.25" (235)	0.25" (6.35) ⌀	EC24N
EL1007BC*	24 V DC	0.5 - 10.44 (0.06 - 1.2)	500 - 700	0.8 (0.32)	9.25" (235)	0.25" (6.35) ⌀	EC24N

*Two clutch springs are furnished to cover torque range. Tool is shipped with heavier clutch spring installed.



Service and Accessories

Manuals:

- 45530128
- 45527595
- 45530136

Controller Manuals:

- 45532066
- 45532041
- 45532058

Accessories:

- Balancer
- Shaker box
- Bits

CONTROLLER							
Model	Input Voltage	Output Voltage	lb (kg)	in (mm)	Soft Start	Speed Adjust	ESD Control
CONTROLLER							
EC24N	115 V AC	24 V DC	5.1 (2.31)	10.5" x 3.3" x 4.1" (267 x 83 x 104)	YES	YES	NO

Versatec Series High Torque Brushless Screwdrivers - Inline/Pistol/Angle

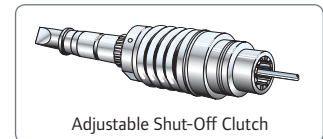
Torque Range: 5.0 - 60.0 in-lbs (0.6 - 6.8 Nm)

Features

- Torque Range: 3.5 - 26.5 in-lbs (0.4 - 3.0 Nm)
- Speeds: 1,200 - 2,000 rpm
- 115 V AC plug in with integral 3 m cable
- Excellent accuracy and durability resulting from improved clutch and brushless motor design
- Wide torque range allows expanded application coverage from a single tool
- Ergonomic soft-touch grip improves operator comfort
- RoHS-compliant
- Bit, hanger bail, and low-torque spring included
- Recommended for higher duty cycle applications where precise torque control is required



Model	V	in-lbs (Nm)	in-lbs (Nm)	rpm	lb (kg)	in (mm)	in (mm)
DC INLINE PUSH-TO-START							
EPB2612N	115 V AC	3.54 - 14.16 (0.4 - 1.6)	10.62 - 26.55 (1.2 - 3.0)	1,200	1.54 (0.7)	10.9" (276)	0.25" (6.4)
EPB2620N	115 V AC	3.54 - 14.16 (0.4 - 1.6)	10.62 - 26.55 (1.2 - 3.0)	2,000	1.54 (0.7)	10.9" (276)	0.25" (6.4)
DC INLINE LEVER START							
ELB2612N	115 V AC	3.54 - 14.16 (0.4 - 1.6)	10.62 - 26.55 (1.2 - 3.0)	1,200	1.54 (0.7)	10.8" (274)	0.25" (6.4)
ELB2620N	115 V AC	3.54 - 14.16 (0.4 - 1.6)	10.62 - 26.55 (1.2 - 3.0)	2,000	1.54 (0.7)	10.8" (274)	0.25" (6.4)



Versatec Series High Torque Screwdrivers - Inline Only

Torque Range: 5.0 - 40.0 in-lbs (0.6 - 4.5 Nm)

Features

- Speeds: 300 - 2,000 rpm
- 115 V AC plug in with detachable 8 foot cable
- Ergonomic package features contoured soft-touch grip, two-finger lever actuation, and easy forward reverse control providing the ultimate in operator comfort and productivity
- Removable contoured flange and torque adjustment cover protects torque setting while giving instant visible confirmation in readout window
- Brush replacement light signals when maintenance is required
- Dual-position cord allows optimal cable routing
- Two bits, two brushes, and hanger bail included
- Recommended for applications where precise torque control is required



Model	V	in-lbs (Nm)	rpm	lb (kg)	in (mm)	in (mm)
DC INLINE PUSH-TO-START						
EP1520N	115 V AC	5.0 - 15.0 (0.6 - 1.7)	2,000	1.6 (0.73)	11.25" (286)	0.25" (6.35)
EP1510N	115 V AC	5.0 - 15.0 (0.6 - 1.7)	1,000	1.6 (0.73)	11.25" (286)	0.25" (6.35)
EP2612N	115 V AC	11.0 - 26.0 (1.2 - 2.9)	1,200	1.6 (0.73)	11.25" (286)	0.25" (6.35)
EP2607N	115 V AC	11.0 - 26.0 (1.2 - 2.9)	700	1.6 (0.73)	11.25" (286)	0.25" (6.35)
EP2603N	115 V AC	11.0 - 26.0 (1.2 - 2.9)	300	1.6 (0.73)	11.25" (286)	0.25" (6.35)
DC INLINE LEVER START						
EL1520N	115 V AC	5.0 - 15.0 (0.6 - 1.7)	2,000	1.63 (0.74)	11.25" (286)	0.25" (6.35)
EL1510N	115 V AC	5.0 - 15.0 (0.6 - 1.7)	1,000	1.63 (0.74)	11.25" (286)	0.25" (6.35)
EL2612N	115 V AC	11.0 - 26.0 (1.2 - 2.9)	1,200	1.63 (0.74)	11.25" (286)	0.25" (6.35)
EL2607N	115 V AC	11.0 - 26.0 (1.2 - 2.9)	700	1.63 (0.74)	11.25" (286)	0.25" (6.35)
EL2603N	115 V AC	11.0 - 26.0 (1.2 - 2.9)	300	1.63 (0.74)	11.25" (286)	0.25" (6.35)
DC TRIGGER START WITH PISTOL ATTACHMENT						
ET4007N	115 V AC	18.0 - 40.0 (2.0 - 4.5)	700	1.83 (0.83)	11.25" (286)	0.25" (6.35)
DC PUSH-TO-START WITH PISTOL ATTACHMENT						
EP4007N	115 V AC	18.0 - 40.0 (2.0 - 4.5)	700	1.83 (0.83)	11.25" (286)	0.25" (6.35)

ES Series Low Torque Screwdrivers - Inline Only

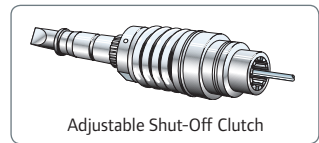
Torque Range: 0.4 - 9.0 in-lbs (0.05 - 1.0 Nm)

Features

- Speeds: 500 – 900 rpm
- 24 V DC from controller (ESCB50)
- Precise torque control for more efficient and accurate production
- Variable speed and soft-start features built into controller
- Externally adjustable torque control
- Clean room models available
- Two bits, 1.5 m cable, and hanger bail included
- Recommended for low-torque applications requiring precise torque and speed control



Model	V	in-lbs (Nm)	in-lbs (Nm)	rpm	lb (kg)	in (mm)	in (mm)	Controller Required
CC INLINE LEVER START								
ES45T	24 V DC	0.5 – 4.7 (0.06 – 0.53)	1.7 – 6.0 (0.19 – 0.68)	600 – 900	0.75 (0.34)	8.87" (225)	0.25" (6.35)	ESCB50
ES50T	24 V DC	0.4 – 4.7 (0.05 – 0.53)	2.0 – 9.0 (0.23 – 1.02)	500 – 650	0.75 (0.34)	8.88" (226)	0.25" (6.35)	ESCB50
CC INLINE CLEAN ROOM LEVER START								
ES50TC	24 V DC	0.4 – 4.7 (0.05 – 0.53)	2.0 – 9.0 (0.23 – 1.02)	500 – 650	0.88 (0.40)	10.50" (267)	0.25" (6.35)	ESCB50



CONTROLLER						
Model	Input Voltage	Output Voltage	lb (kg)	in (mm)	Soft Start	Speed Adjust
CONTROLLER						
ESCB50	115 V AC	24 V DC	4.4 (1.9)	6.8" x 5.8" x 4.3" (171 x 146 x 108)	YES	YES

Service and Accessories

Manuals:

- 45527777
- 45527702
- 45527801

Controller Manuals:

- 45532090
- 45532074
- 45532082

Accessories:

- Balancer
- Shaker box
- Bits

ES Series High Torque Screwdrivers - Inline/Pistol/Angle

Torque Range: 4.0 - 56.0 in-lbs (0.5 - 6.3 Nm)

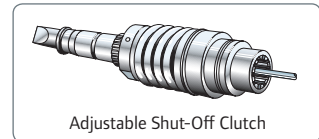
Features

- Torque Range: 4.0 – 56.0 in-lbs (0.45 – 6.3 Nm)
- Speeds: 250 – 1,850 rpm
- 115 V AC plug in with integral 3 m cable
- Precise torque control for more efficient and accurate production
- Two bits, two brushes, and hanger bail included
- Recommended for applications where precise torque control is required



ES100T

Model	V	in-lbs (Nm)	rpm	lb (kg)	in (mm)	in (mm)
DC INLINE PUSH-TO-START						
ES90P	115 V AC	4.4 – 16.0 (0.5 – 1.8)	2,000	1.50 (0.68)	10.00" (254)	0.25" (6.35)
ES60P	115 V AC	4.4 – 17.0 (0.5 – 1.9)	1,000	1.50 (0.68)	10.00" (254)	0.25" (6.35)
ES80P	115 V AC	12.0 – 24.0 (1.4 – 2.7)	1,200	1.50 (0.68)	10.00" (254)	0.25" (6.35)
ES70P	115 V AC	10.0 – 26.0 (1.1 – 2.9)	700	1.50 (0.68)	10.00" (254)	0.25" (6.35)
DC INLINE LEVER START						
ES90T	115 V AC	4.4 – 16.0 (0.5 – 1.8)	2,000	1.53 (0.69)	10.00" (254)	0.25" (6.35)
ES60T	115 V AC	4.4 – 17.0 (0.5 – 1.9)	1,000	1.53 (0.69)	10.00" (254)	0.25" (6.35)
ES70T	115 V AC	10.0 – 26.0 (1.1 – 2.9)	700	1.53 (0.69)	10.00" (254)	0.25" (6.35)
DC TRIGGER START WITH PISTOL ATTACHMENT						
ES100T	115 V AC	15.0 – 40.0 (1.9 – 4.5)	400	1.68 (0.76)	10.00" (254)	0.25" (6.35)
DC PUSH-TO-START WITH PISTOL ATTACHMENT						
ES100P	115 V AC	15.0 – 40.0 (1.9 – 4.5)	400	1.65 (0.75)	10.00" (254)	0.25" (6.35)



Adjustable Shut-Off Clutch

Service and Accessories

Manuals:

- 45527769
- 45527678

Accessories:

- Extension cord
- Balancer
- Pistol grip handle: EP4007N-48
- Sockets, see form # IR-0506-016

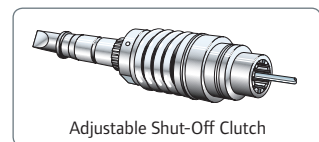


ES60T



ES70T2S3

Model	V	in-lbs (Nm)	rpm	lb (kg)	in (mm)	in (mm)	in (mm)	in
DC LEVER START LARGE ANGLE HEAD								
ES90T2S3	115 VAC	6 – 19 (0.68 – 2.2)	1,300	2.1 (0.95)	16.89" (429)	0.52" (13.21)	1.99" (50.55)	1/4"
ES60T2S3	115 VAC	6 – 23 (0.68 – 2.6)	650	2.1 (0.95)	16.89" (429)	0.52" (13.21)	1.99" (50.55)	1/4"
ES70T2S3	115 VAC	11 – 36 (1.2 – 4.1)	450	2.1 (0.95)	16.89" (429)	0.52" (13.21)	1.99" (50.55)	1/4"
ES100T2S3	115 VAC	14 – 56 (1.6 – 6.3)	250	2.1 (0.95)	16.89" (429)	0.52" (13.21)	1.99" (50.55)	1/4"
ES60T2S5	115 VAC	6 – 23 (0.68 – 2.6)	650	2.1 (0.95)	16.89" (429)	0.52" (13.21)	1.73" (43.94)	1/4"
ES100T2S5	115 VAC	14 – 56 (1.6 – 6.3)	250	2.1 (0.95)	16.89" (429)	0.52" (13.21)	1.73" (43.94)	1/4"
DC LEVER START SMALL ANGLE HEAD								
ES60T1S5	115 VAC	4 – 17 (0.45 – 1.9)	950	1.9 (0.86)	16.70" (424)	0.33" (8.38)	1.47" (37.34)	1/4"



Adjustable Shut-Off Clutch

Service and Accessories

Manuals:

- 45527751
- 45527611
- 45527785

Accessories:

- Balancer
- Shaker box
- Bits
- Pistol grip handle: DLW2100TP

Accessories

Take advantage of our extensive line of accessories to optimize your assembly operations and maximize your productivity. From Torque Reaction Arms and Torque Tubes to Spindle Accessories and Spring Balancers, we have options to complement your work cells and improve your ergonomics and efficiency. Whether a single, handheld application or a sophisticated set of custom engineered systems, we have the tools and accessories to meet your requirements and the global network of service and solutions providers capable of meeting your needs for application studies, line audits, design, project management, installation, and service.



Spring Balancers

Cable

BLD Series

Features

- Self-lubricating bushings
- Adjustable capacity and stroke limiting device
- Auxiliary safety suspension

Manuals:



BLD



BLD1

BMD Series

Features

- Safety device prevents dropping of load due to spring breakage (except on BMDS-2)
- Anti-friction cable guide
- Adjustable stroke-limiting device

Manuals:



BMDL4



BMDS2



BMDLL



BMDS4



BMDS-2

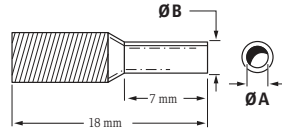
Model	SWL lbs (kg)	ft (m)	lbs (kg)
BLD SERIES			
BLD1	0.9 – 2.2 (0.4 – 1.0)	5.2 (1.6)	1.3 (0.6)
BLD2	2.2 – 4.4 (1.0 – 2.0)	5.2 (1.6)	1.3 (0.6)
BLD3	4.4 – 6.6 (2.0 – 3.0)	5.2 (1.6)	1.5 (0.7)

Model	SWL lbs (kg)	ft (m)	lbs (kg)
BMD SERIES			
BMDS-2	2.2 – 5.5 (1.0 – 2.5)	6.5 (2.0)	4.4 (2.0)
BMDS-4	4.4 – 8.8 (2.0 – 4.0)	6.5 (2.0)	4.4 (2.0)
BMDL-4	4.4 – 8.8 (2.0 – 4.0)	8.2 (2.5)	6.4 (2.9)
BMDS-6	8.8 – 13.2 (4.0 – 6.0)	6.5 (2.0)	5.1 (2.3)
BMDL-6	8.8 – 13.2 (4.0 – 6.0)	8.2 (2.5)	7.1 (3.2)
BMDS-8	13.2 – 17.6 (6.0 – 8.0)	6.5 (2.0)	5.5 (2.5)
BMDL-8	13.2 – 17.6 (6.0 – 8.0)	8.2 (2.5)	7.7 (3.5)
BMDL-10	17.6 – 22.0 (8.0 – 10.0)	8.2 (2.5)	8.2 (3.7)
BMDL-12	22.0 – 26.5 (10.0 – 12.0)	8.2 (2.5)	8.8 (4.0)
BMDLL-4 ⁽¹⁾	4.4 – 8.8 (2.0 – 4.0)	8.2 (2.5)	6.6 (3.0)
BMDLL-6 ⁽¹⁾	8.8 – 13.2 (4.0 – 6.0)	8.2 (2.5)	7.3 (3.3)
BMDLL-8 ⁽¹⁾	13.2 – 17.6 (6.0 – 8.0)	8.2 (2.5)	7.9 (3.6)
BMDLL-10 ⁽¹⁾	17.6 – 22.0 (8.0 – 10.0)	8.2 (2.5)	8.4 (3.8)

(1) Locking type balancer.

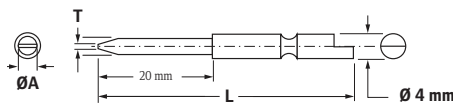
Electric Screwdrivers Optional Accessories

Accessories



Vacuum Pick-Up Sleeves

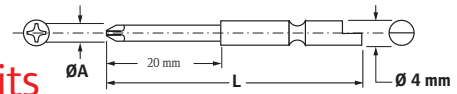
Part Number	Complementing Bit Part Number	"A" Inside Diameter in (mm)	"B" Outside Diameter in (mm)
DLS2120	DLB2122-10	0.079" (2.0)	0.138" (3.5)
DLS2122	DLB2122-10	0.098" (2.5)	0.138" (3.5)
DLS2123	DLB2122-10	0.106" (2.7)	0.138" (3.5)
DLS2124	DLB2122-10	0.122" (3.1)	0.138" (3.5)
DLS2125	DLB2124-10	0.130" (3.3)	0.177" (4.5)
DLS2126	DLB2124-10	0.138" (3.5)	0.177" (4.5)
DLS2127	DLB2124-10	0.146" (3.7)	0.177" (4.5)
DLS2128	DLB2126-10	0.158" (4.0)	0.177" (4.5)
DLS2129	DLB2126-10	0.165" (4.2)	0.212" (5.5)
DLS2130	DLB2126-10	0.177" (4.5)	0.212" (5.5)
DLS2131	DLB2128-10, DLB2130-10, XP161, XRP161	0.185" (4.7)	0.212" (5.5)
DLS2132	DLB2128-10, DLB2130-10, XP161, XRP161	0.201" (5.1)	0.212" (5.5)
DLS2133	DLB2128-10, DLB2130-10, XP161, XRP161	0.209" (5.3)	0.256" (6.5)
DLS2134	DLB2128-10, DLB2130-10, XP161, XRP161	0.221" (5.6)	0.256" (6.5)
EL0410BC-53	DLB2128-10, DLB2130-10, XP161, XRP161	0.240" (6.1)	0.276" (7.0)



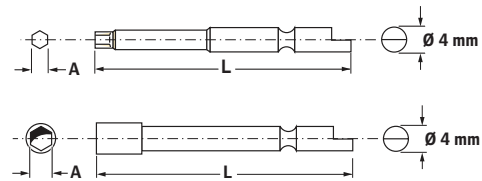
Slot Bits

Part Number	"T" Size in	"A" Diameter in (mm)	"L" Length in	Screw Size Range	Quantity
DLB2220-10	0.012	0.079" (2.0)	1.7"	00 - 0	10
DLB2221-10	0.012	0.098" (2.5)	1.7"	00 - 0	10
DLB2222-10	0.016	0.117" (3.0)	1.7"	0 - 2	10
DLB2223-10	0.02	0.157" (4.0)	1.7"	2 - 4	10
DLB2224-10	0.026	0.197" (5.0)	1.7"	3 - 5	10

Phillips Bits

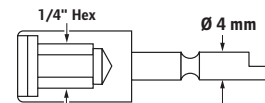


Part Number	Point Size	"A" Diameter in (mm)	"L" Length in	Screw Size Range	Quantity
DLB2120-10	0	0.071" (1.8)	1.7"	0 - 1	10
DLB2121-10	0	0.071" (1.8)	2.5"	0 - 1	10
DLB2122-10	0	0.079" (2.0)	1.7"	00 - 0	10
DLB2123-10	0	0.079" (2.0)	2.5"	00 - 0	10
DLB2124-10	0	0.098" (2.5)	1.7"	0 - 1	10
DLB2125-10	0	0.098" (2.5)	2.5"	0 - 1	10
DLB2126-10	1	0.118" (3.0)	1.7"	2 - 4	10
DLB2127-10	1	0.118" (3.0)	2.5"	2 - 4	10
DLB2128-10	1	0.157" (4.0)	1.7"	2 - 4	10
DLB2129-10	1	0.157" (4.0)	2.5"	2 - 4	10
DLB2130-10	2	0.157" (4.0)	1.7"	5 - 10	10
DLB2131-10	2	0.157" (4.0)	2.5"	5 - 10	10
DLB2132-10	3	0.236" (6.0)	1.7"	10 - 1/4	10



Hexagon, Male and Female

Part Number	Screw Size	"A" Hex Size in (mm)	"L" Length in	Use Diagram	Quantity
DLB2321-10	0.12	0.059" (1.5)	1.7"	Male	10
DLB2322-10	0.16	0.079" (2.0)	1.7"	Male	10
DLB2323-10	0.24	0.118" (3.0)	1.7"	Male	10
DLB2324-10	0.31	0.157" (4.0)	1.7"	Male	10
DLB2420-10	N/A	0.091" (2.3)	1.7"	Female	10
DLB2421-10	N/A	0.098" (2.5)	1.7"	Female	10
DLB2422-10	N/A	0.118" (3.0)	1.7"	Female	10
DLB2423-10	0.08	0.157" (4.0)	1.7"	Female	10
DLB2424-10	0.09	0.177" (4.5)	1.7"	Female	10
DLB2425-10	0.1	0.197" (5.0)	1.7"	Female	10
DLB2426-10	0.12	0.217" (5.5)	1.7"	Female	10



Insert Bit Holders

Part Number	Description	For Use With
DLW-4100	Slotted Bit Holder	EL0109B / "Micro" / SS-ESD

Torque Adjustment Covers

Part Number	Description	For Use With
ES60T-675	Torque Adjustment Cover	ES60, ES70, ES80, ES90, ES100
EL0410BC-46	Torque Adjustment Cover	Low-Torque VersaTec
EL0410BC-46-ESD	Torque Adjustment Cover	Low-Torque VersaTec - ESD

Suspension Bails

Part Number	Description	For Use With
EP4007N-365	Vertical Suspension Bail	High-Torque VersaTec
EP4007N-366	Horizontal Suspension Bail	High-Torque VersaTec
EL0109B-365	Vertical Suspension Bail	Low-Torque VersaTec
DAA40-A366	Horizontal Hanger	Electric angle screwdrivers

Power and Extension Cords

Part Number	Description	For Use With
EL0109B-239	Power Cord Assembly	High-Torque VersaTec
ES40T-249	Power Cord Assembly	Low-Torque ES
EP4007N-239-8A	8' Coiled Extension Cord	High-Torque VersaTec
EP4007N-239-12A	12' Coiled Extension Cord	High-Torque VersaTec
EP4007N-239-25	25' Coiled Extension Cord	High-Torque VersaTec
ES40T-249-2	6.5' Extension Cord	Low-Torque ES and VersaTec

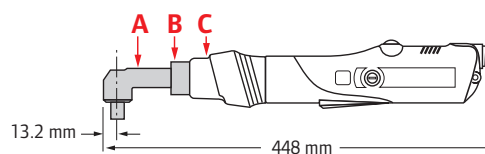
Other Accessories

Part Number	Description	Shape	For Use With
EP4007N-516	Torque Adjusting Wrench	N/A	VersaTec Models
DLW3402	Plastic Screw Shaker Box	5-1/2" x 3-7/8"	Screw sizes 0 - 2 mm (0.07" - 0.08")
DLW3602	Plastic Screw Shaker Box	5-1/2" x 3-7/8"	Screw sizes 1 - 4 mm (0.08" - 0.11")
DLW3802	Plastic Screw Shaker Box	6-11/16" x 4-7/8"	Screw sizes 3 - 8 mm (0.12" - 0.16")



Pistol Attachment

Part Number	Description	For Use With
EP4007N-48	Attachable Pistol Grip handle	High-Torque VersaTec
DLW2100TP	Attachable Pistol Grip handle	ES60, ES70 ES80, ES90, EPB, ELB



Angle Head Conversion

Component	Part Number	Description
A	3RL23	1/4" Quick Change
A	3RL25	1/4" Square Drive
B	EL4007N2S5-AHC	Coupling Nut
C	ET4007N2S5-580	Clutch Cover

Visit
IRTOOLS.COM
 To Find An Authorized Dealer



Ingersoll Rand (NYSE:IR) advances the quality of life by creating comfortable, sustainable and efficient environments. Our people and our family of brands—including Club Car®, Ingersoll Rand®, Thermo King® and Trane®—work together to enhance the quality and comfort of air in homes and buildings; transport and protect food and perishables; and increase industrial productivity and efficiency. We are a \$13 billion global business committed to a world of sustainable progress and enduring results.



irtools.com